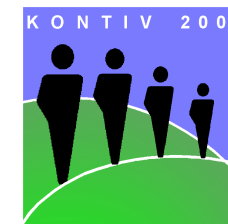


Design Characteristics of National Travel Surveys



An International Comparison for Ten Countries

by

Uwe Kunert
Jutta Kloas
Hartmut Kuhfeld

German Institute for Economic Research
DIW-Berlin
Koenigin-Luise-Strasse 5
14195 Berlin
Germany

Presentation at the 2002 Annual Meeting of the
Transportation Research Board





- History and Context of the NTS in Germany
- Approach and Design for the Pilot Study
- Key Characteristics of NTS in 10 Countries
- Conclusions
- www.KONTIV2002.de – Mobility in Germany

NTS International: Basic Design Elements of KONTIV-Surveys in West-Germany



	1976	1982	1989
Survey-mode	SAQ mail		SAQ Interviewer
Target population	Households speaking German		
Persons eligible	From 10 years		From 6 years
Diary days	2 or 3	1	1
Net sample size persons	41 000	39 000	42 000
Response rates	72 %	66 %	64 %



- No Institutional Continuity for NTS in Germany
- Long Time Interval Since Last Survey
- No NTS for East-Germany
- Methodological Developments in Survey Design
- Little Scientific Knowledge-Sharing for Methodology



PILOT STUDY (Summer 2001)

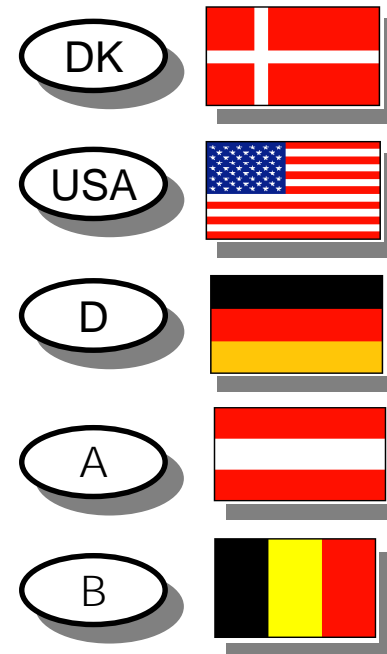
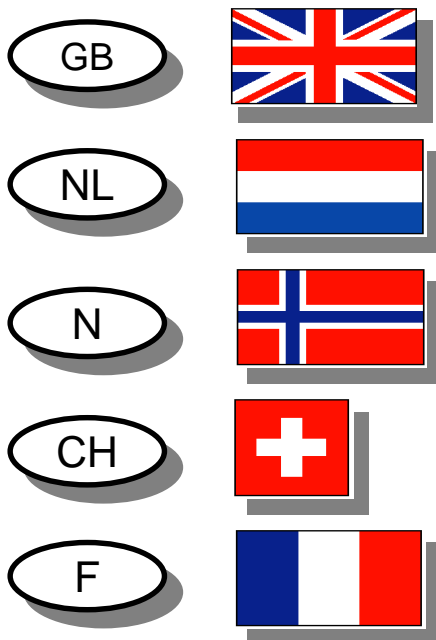
- Decisions Concerning Core Components and Options
- Experimental Design (2,400 Households)
- Including a Combination of Different Survey Methods
(Mail Only and a Mixed Mode by Phone/Mail)



MAIN SURVEY (Autumn 2001 to Autumn 2003)

- Collection of Information of the Whole Household
- Survey Guided by Fixed Diary-Dates and Lasting 12 Months

NTS International: Countries



NTS International: Timing



GB	in the '70s, '85/'86, since '88 continuously
NL	since '78 annually
N	'84/'85, '91/'92, '97/'98, 2001
CH	'74, '79, '84, '89, '94, 2000, 2005
F	'59, '66/'67, '73/'74, '81/'82, '93/'94', possibly 2003

NTS International: Timing



DK

'75, '81, '86, since '92 annually

USA

'69, '77, '83, '90, '95, 2001

D

'75/'76, '82, '89, 2002

A

'83, '95

B

'98/'99



GB

Interviewer, questionnaire, Interviewer

NL

Postal, questionnaires, motivation by telephone

N

Telephone Interview (CATI), SAQ for long trips

CH

CATI, announcement of the interview by letter

F

Face to face interviews



DK

CATI, announcement of the interview by letter

USA

Mailed Travel Diary, CATI

D

SAQ, Interviewer

A

SAQ, Interviewer, control sample by post or telephone

B

Mixed: postal (SAQ) and telephone (CATI)



	Sampling Frame	Sample Size
GB	Post Office Address File	7,000 Persons
NL	Addresses of Dutch Households	65,000 Persons 6+, 5,000 <6
N	Random Sample	18,000 Persons
CH	RDD National Telephone Register	29,000 Persons
F	1990 Census Sample	14,000 Households



	Sampling Frame	Sample Size
DK	Public Register	15,000 Persons
USA	List-assisted RDD	95,000 Persons
D	Random-Route Sampling	21,000 Households, 42,000 Persons
A	Random Sampling, Household Database	12,783 Households
B	National Register	9,459 Households

NTS International: Recall Period and Diaries



	Recall Period	Diary
GB	7 day diary day by day	✓
NL	1 day	✓
N	1 (to 3) days	simple diary
CH	1 day	no
F	1 day (Mo-Fr) + last weekend	no (car 7 days)

NTS International: Recall Period and Diaries



	Recall Period	Diary
DK	1 day	✓
USA	1 day	simple diary
D	1 day	✓
A	1 day	✓
B	1 day	✓

NTS International: Long Distance Trips



	Recall Period	Long Trip Definition
GB	3 weeks	> 50 miles
NL	-	-
N	1 month	100 km
CH	unlimited (last trip)	Overnight stay not at home
F	3 months by interview + 3 months by SAQ	100 km

NTS International: Long Distance Trips



	Recall Period	Long Trip Definition
DK	1 month	100 km
USA	2 weeks	75 miles
D	3 months	> 50 km
A	2 weeks	> 80 km
B	4 weeks	> 200 km

NTS International: Segmented Trips



GB

Mode, time, distance

NL

Mode (public transport), time, distance

N

Mode, time, distance

CH

Mode, time, distance

F

Mode

NTS International: Segmented Trips



DK

Mode, time, distance

USA

Mode (public transport), time

D

Mode

A

??

B

Mode, time, distance



GB

No - generally excluded

NL

Until '98 yes, 1999-2000 no

N

No

CH

No (CATI without stages)

F

No



DK

Yes (only for persons who have transportation duties as major part of their jobs)

USA

Yes

D

No

A

No

B

Yes (special question about trips for the job)

NTS International: Vehicle Mileage



- GB
- NL
- N
- CH
- F

Estimated Annual Mileage	
GB	✓
NL	✓
N	✓
CH	✓
F	✓

Odometer Reading	
GB	✓
NL	✓
N	-
CH	✓
F	✓

NTS International: Vehicle Mileage



- DK
- USA
- D
- A
- B

	Estimated Annual Mileage
DK	✓
USA	✓
D	-
A	✓
B	✓

	Odometer Reading
DK	-
USA	✓
D	-
A	✓
B	✓



	NRP-Survey	WWW-Presentation
GB	No - (planned for 2002)	Methodology, results - data (soon, system in development)
NL	No - (soon)	Results (soon)
N	No	No
CH	Yes	Methodology, results - data planned
F	No (no need => post- stratification)	No



	NRP-Survey	WWW-Presentation
DK	Yes	Methodology, results
USA	No	Methodology, results, data
D	Yes	No
A	Yes	No
B	Yes	Methodology, results, data



- Objectives and Core Contents of all NTS similar
- Methodological Diversity in all Design Elements
- Institutional Aspects



NTS International: KONTIV 2002 Survey Process

